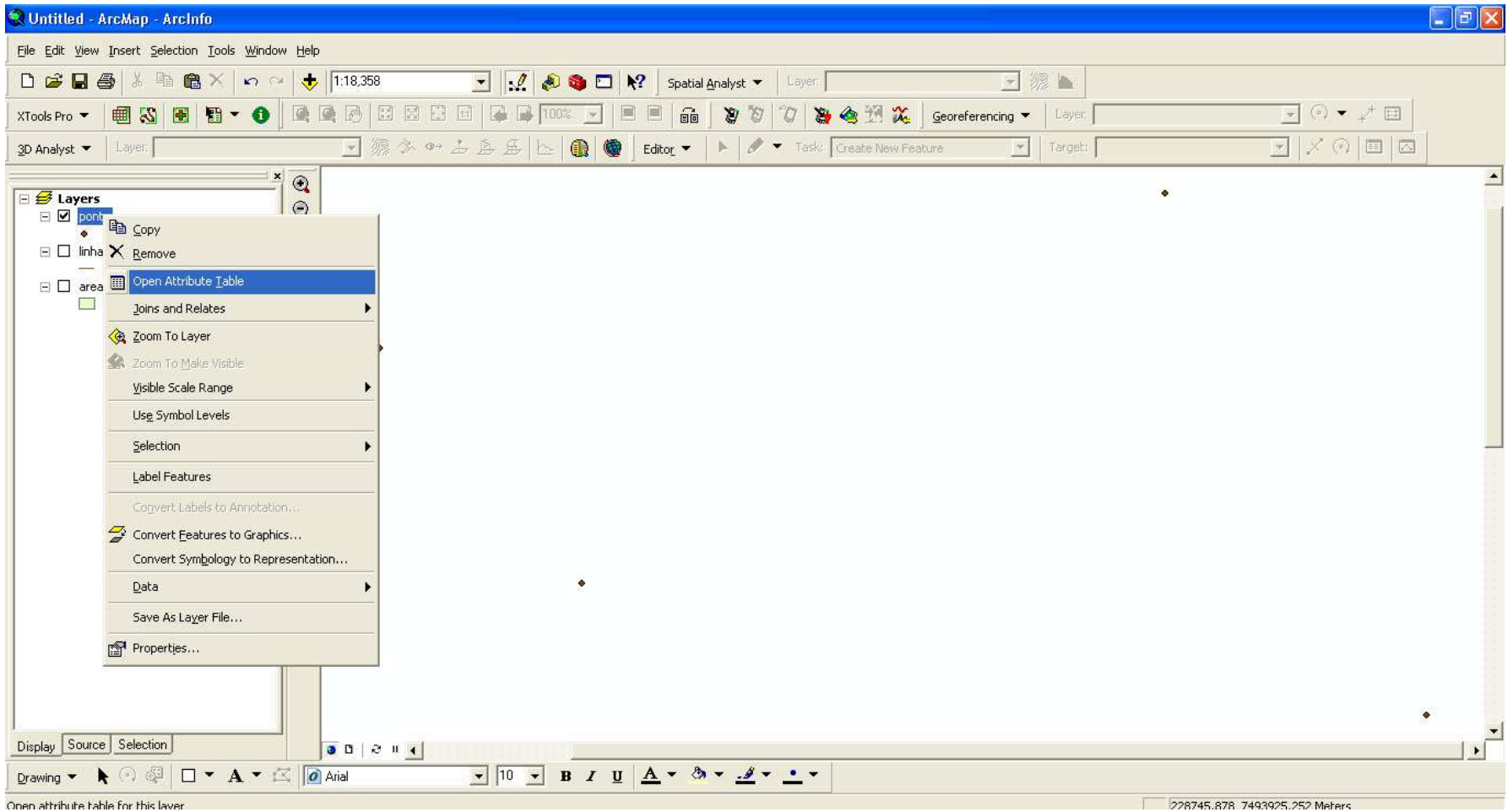


**Armazenando a coordenada x,y
do shapefile de ponto**



Open attribute table for this layer

228745,878 7493925,252 Meters

1:18,358

Spatial Analyst

Layer:

Attributes of ponto

FID	Shape *	Id
0	Point	1
1	Point	1
2	Point	2
3	Point	0

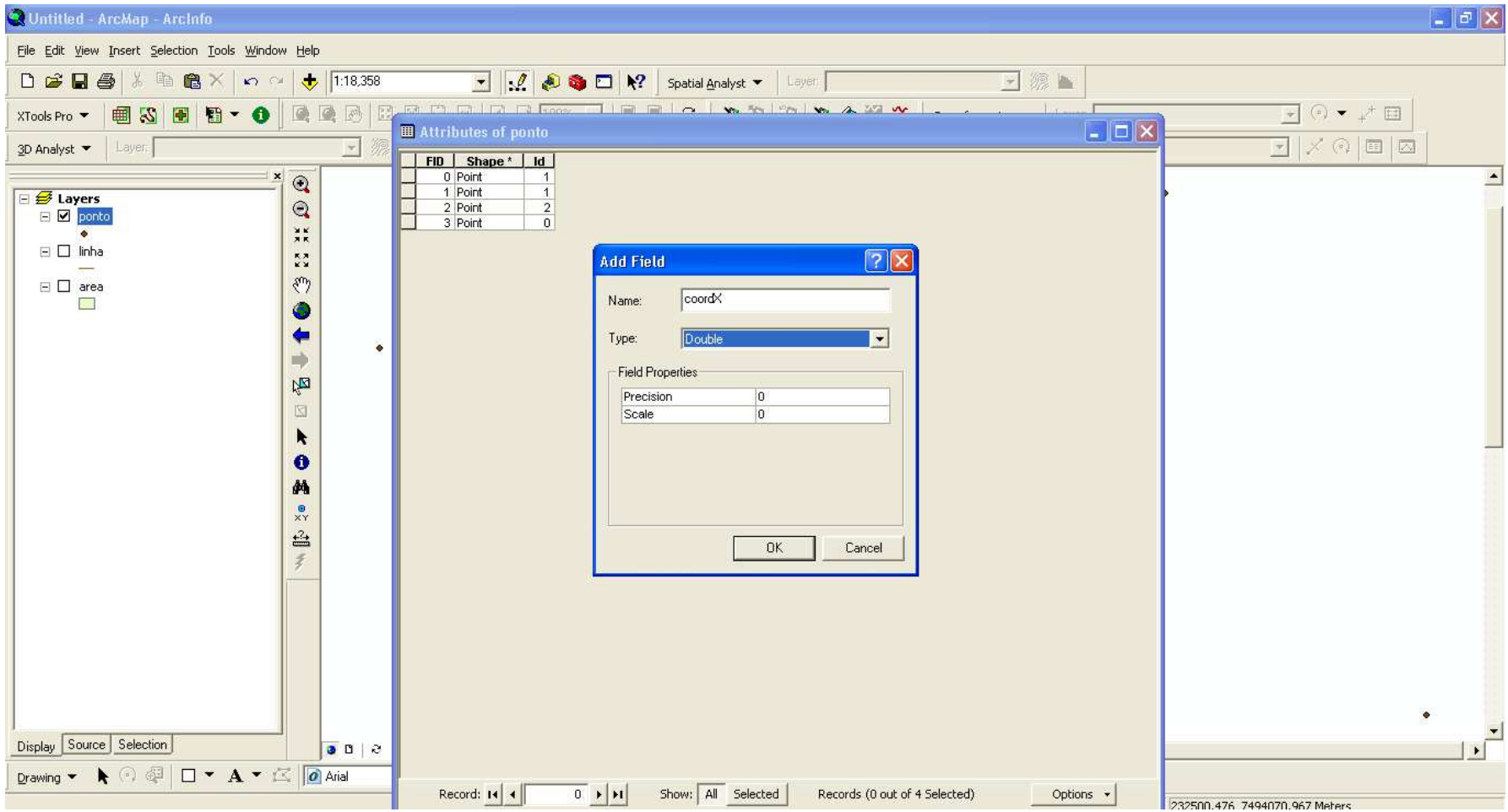
- Find & Replace...
- Select By Attributes...
- Clear Selection
- Switch Selection
- Select All
- Add Field...**
- Turn All Fields On
- Restore Default Column Widths
- Related Tables
- Create Graph...
- Add Table to Layout
- Reload Cache
- Print...
- Reports
- Export...
- Appearance...

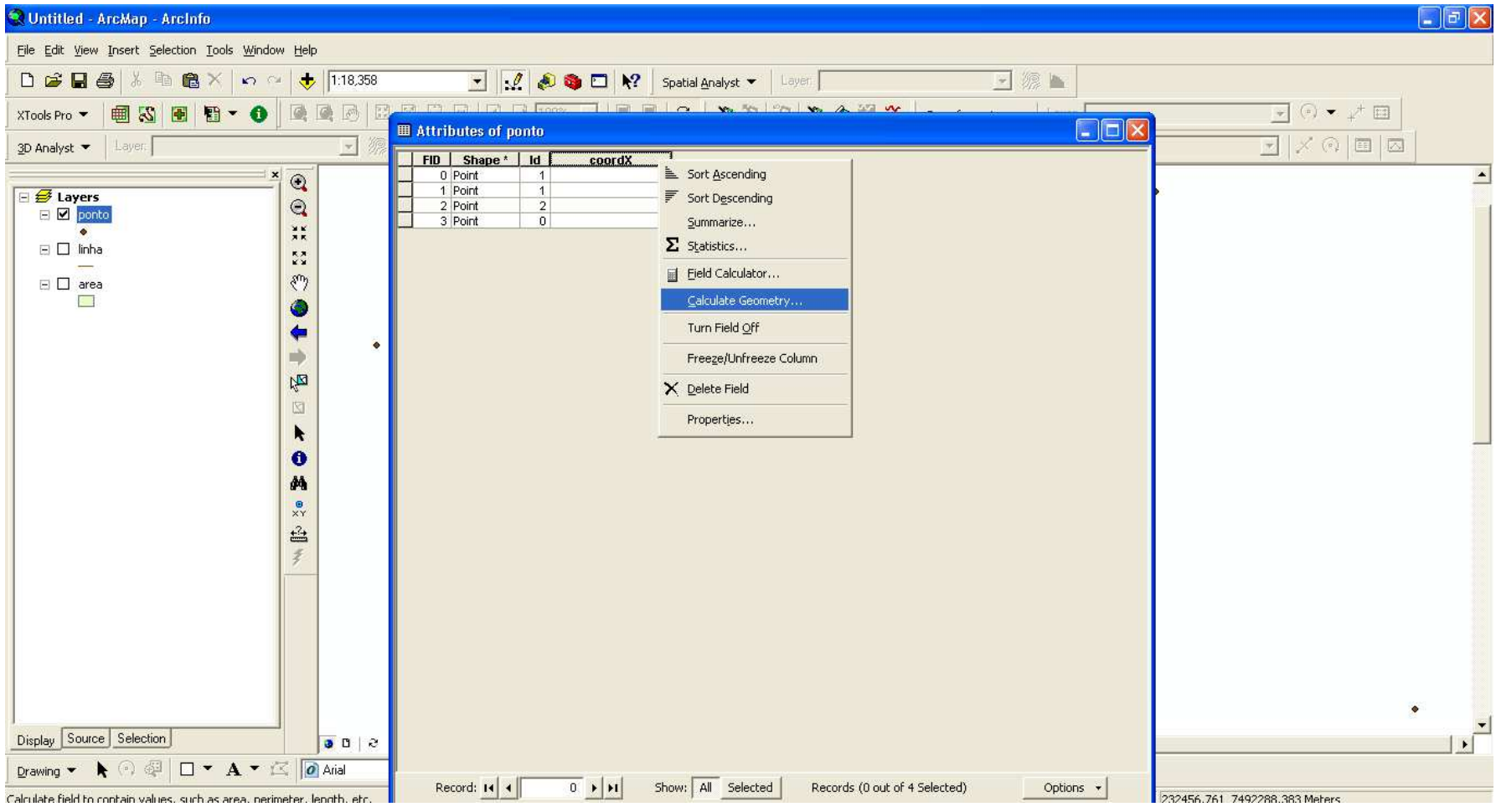
Record: 0

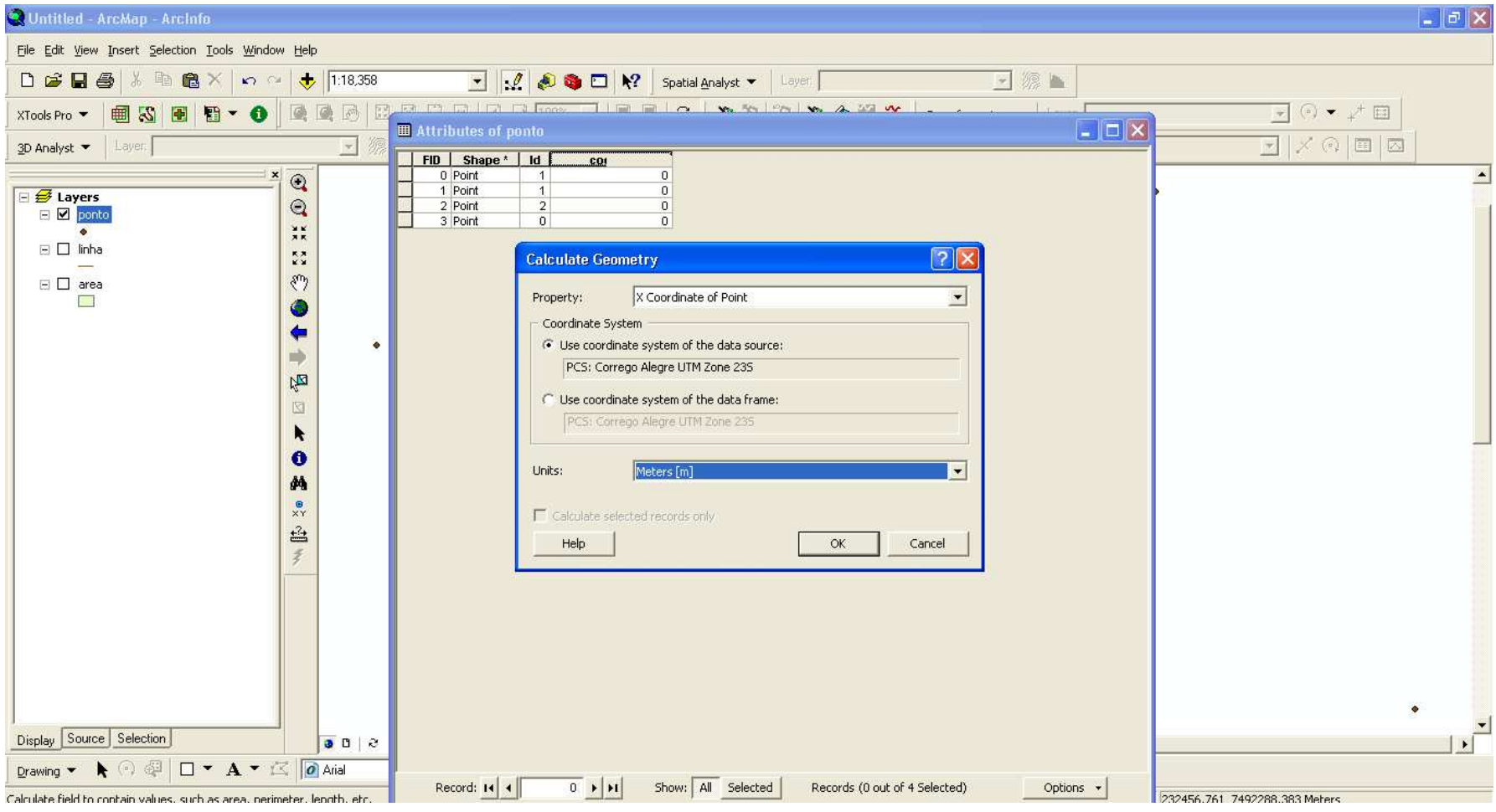
Show: All Selected

Records (0 out of 4 Selected)

Options







Calculate field to contain values, such as area, perimeter, length, etc.

Untitled - ArcMap - ArcInfo

File Edit View Insert Selection Tools Window Help

1:18,358 Spatial Analyst Layer

XTools Pro 3D Analyst Layer

Layers

- ponto
- linha
- area

Attributes of ponto

FID	Shape *	Id	coordX
0	Point	1	229875,736282
1	Point	1	232456,793208
2	Point	2	233611,476569
3	Point	0	226985,173043

Display Source Selection

Drawing Arial

Record: 0 Show: All Selected Records (0 out of 4 Selected) Options

232500.476 7494070.967 Meters

Untitled - ArcMap - ArcInfo

File Edit View Insert Selection Tools Window Help

1:18,358 Spatial Analyst Layer:

XTools Pro 3D Analyst Layer:

Layers

- pointo
- linha
- area

Attributes of ponto

FID	Shape *	Id	coordX
0	Point	1	229875,736282
1	Point	1	232456,793208
2	Point	2	233611,476569
3	Point	0	226985,173043

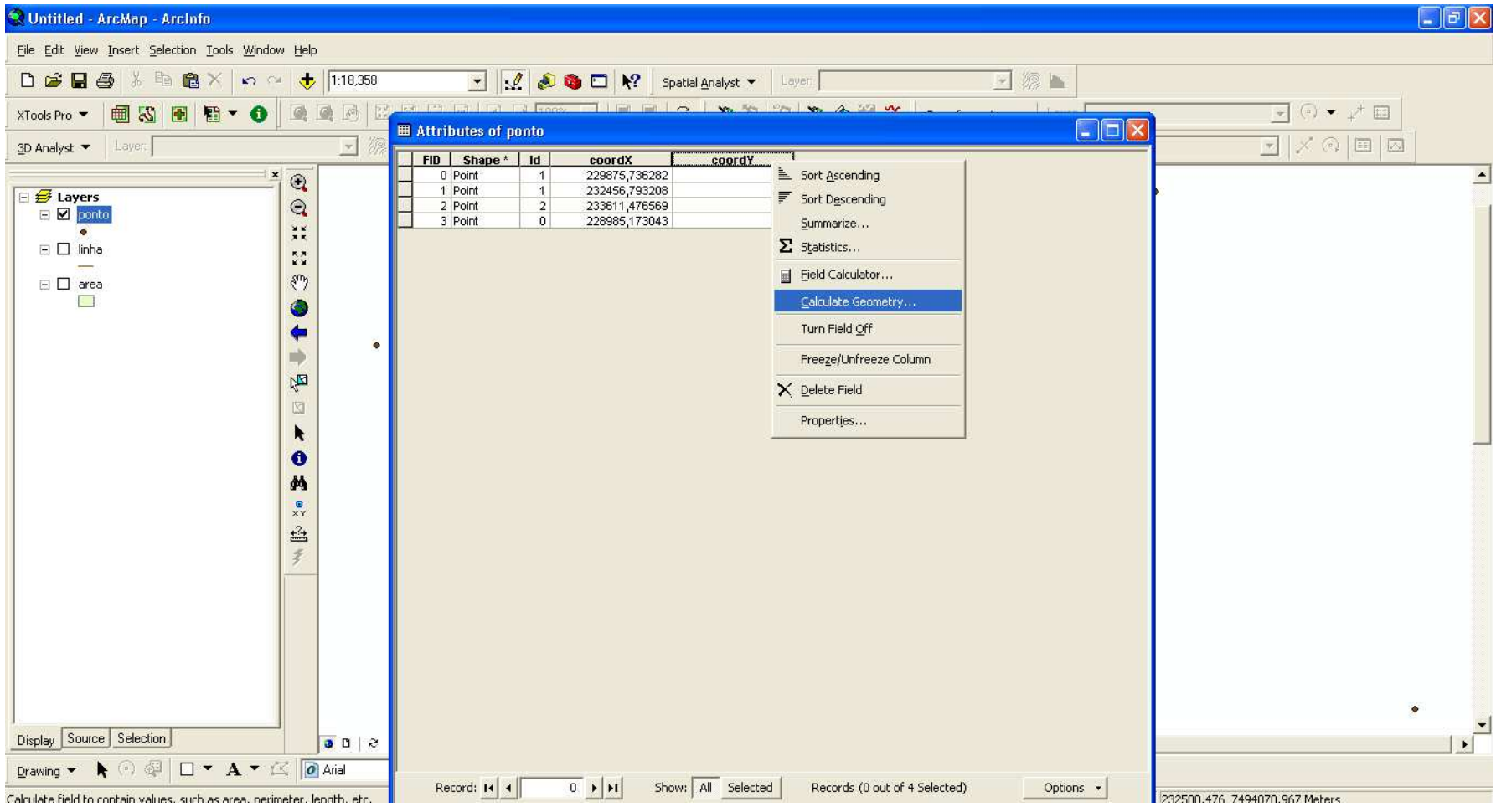
Find & Replace...
Select By Attributes...
Clear Selection
Switch Selection
Select All
Add Field...
Turn All Fields On
Restore Default Column Widths
Related Tables
Create Graph...
Add Table to Layout
Reload Cache
Print...
Reports
Export...
Appearance...

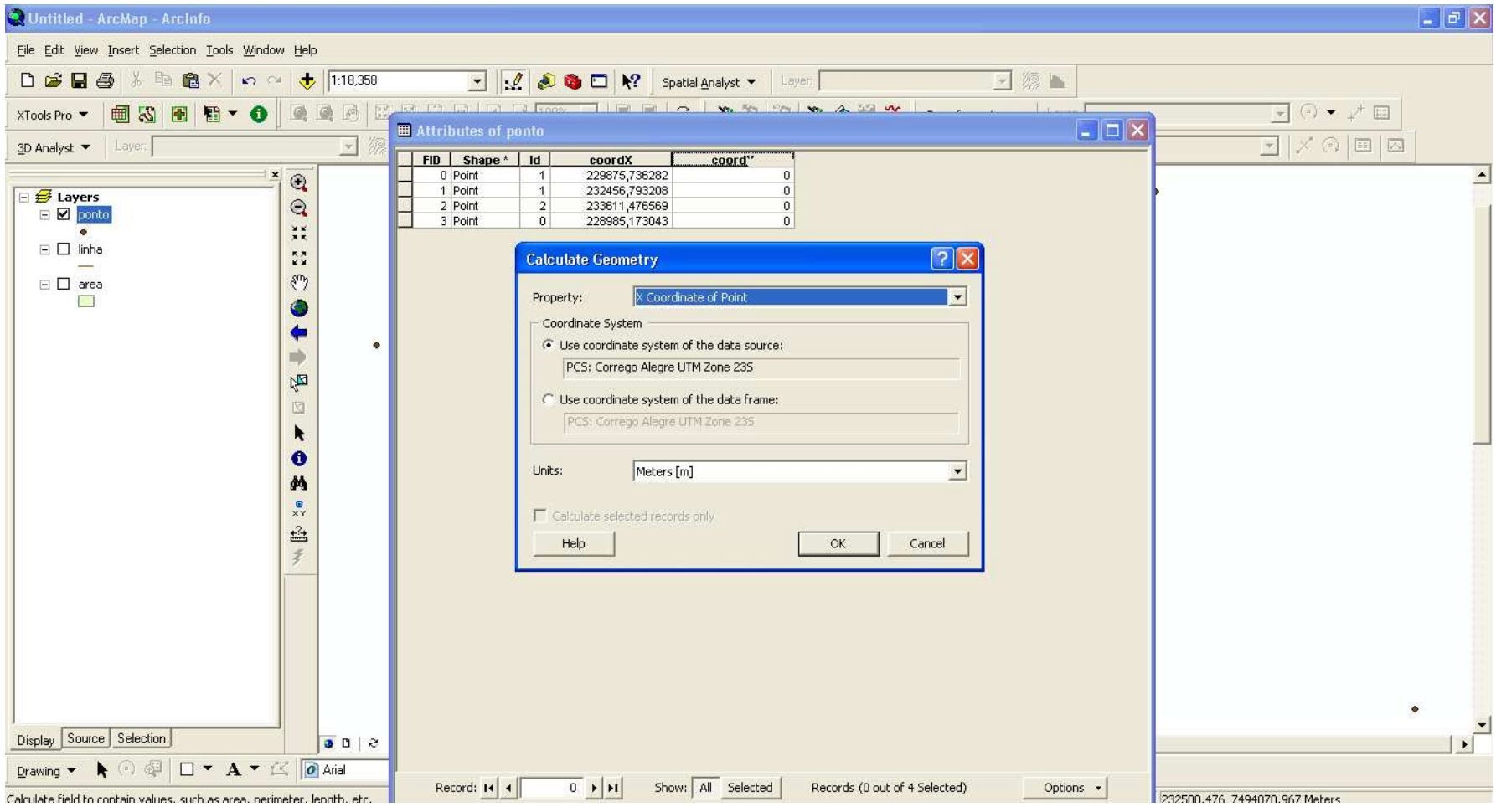
Display Source Selection

Drawing Arial

Record: 0 Show: All Selected Records (0 out of 4 Selected) Options 232500.476 7494070.967 Meters

Adds a new field to the table





Calculate field to contain values, such as area, perimeter, length, etc.

Untitled - ArcMap - ArcInfo

File Edit View Insert Selection Tools Window Help

1:18,358 Spatial Analyst Layer:

XTools Pro 3D Analyst Layer:

Layers

- ponto
- linha
- area

Attributes of ponto

FID	Shape *	Id	coordX	coordY
0	Point	1	229875,736282	229875,736282
1	Point	1	232456,793208	232456,793208
2	Point	2	233611,476569	233611,476569
3	Point	0	228985,173043	228985,173043

Display Source Selection

Drawing Arial

Record: 0 Show: All Selected Records (0 out of 4 Selected) Options

232500.476 7494070.967 Meters