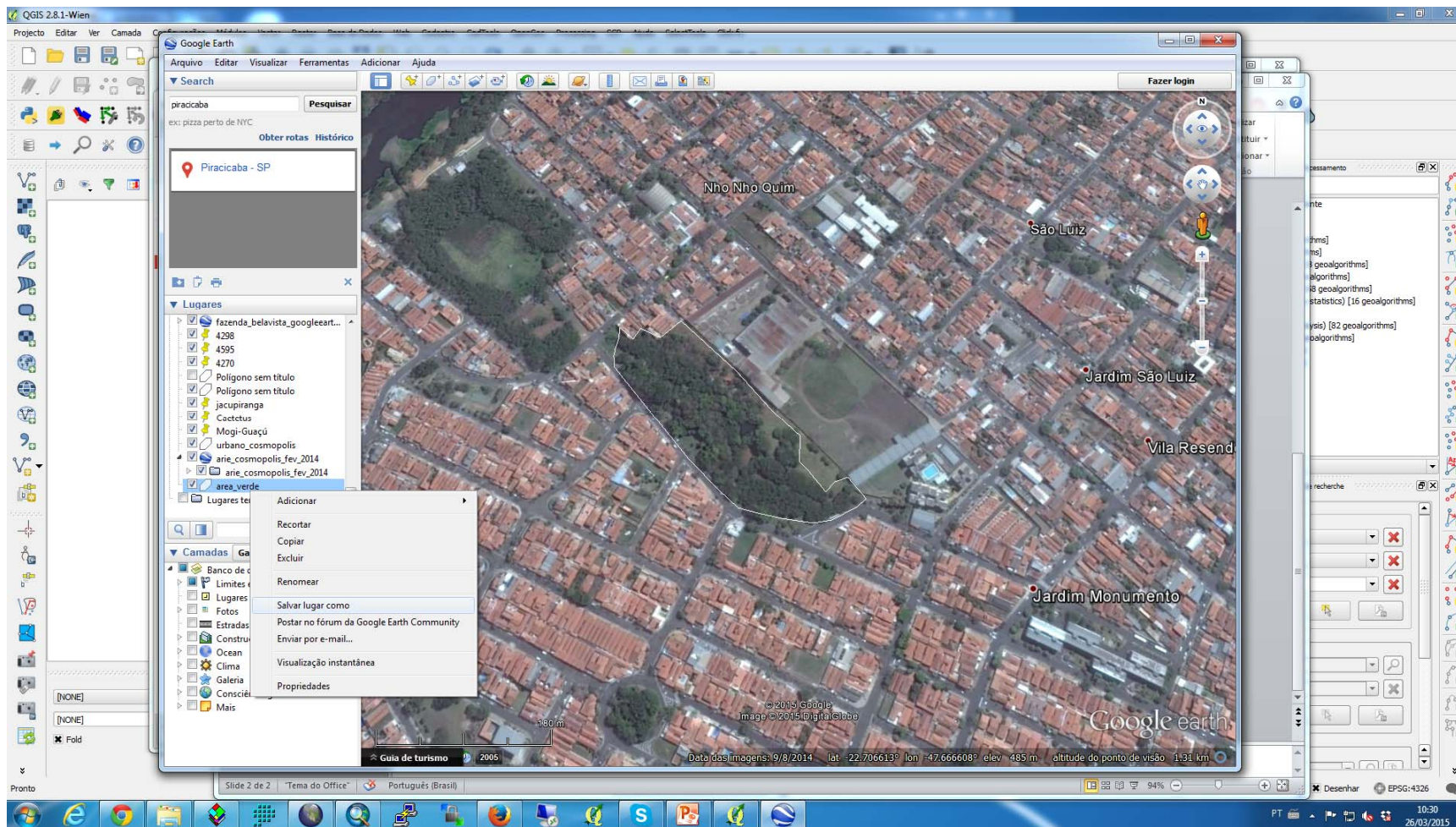
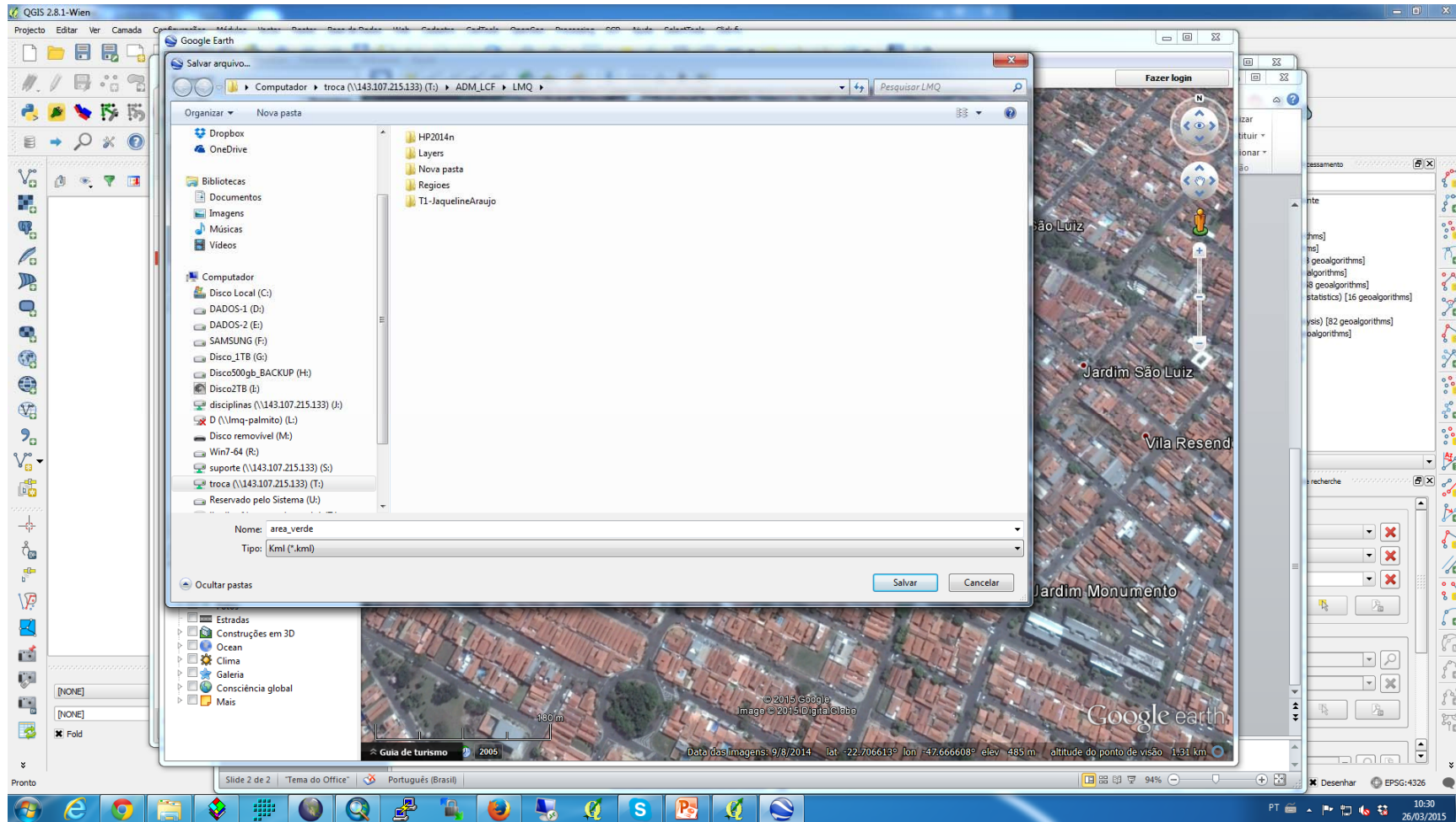


TUTORIAL REPROJETAR VETOR KML QGIS 2.8.1

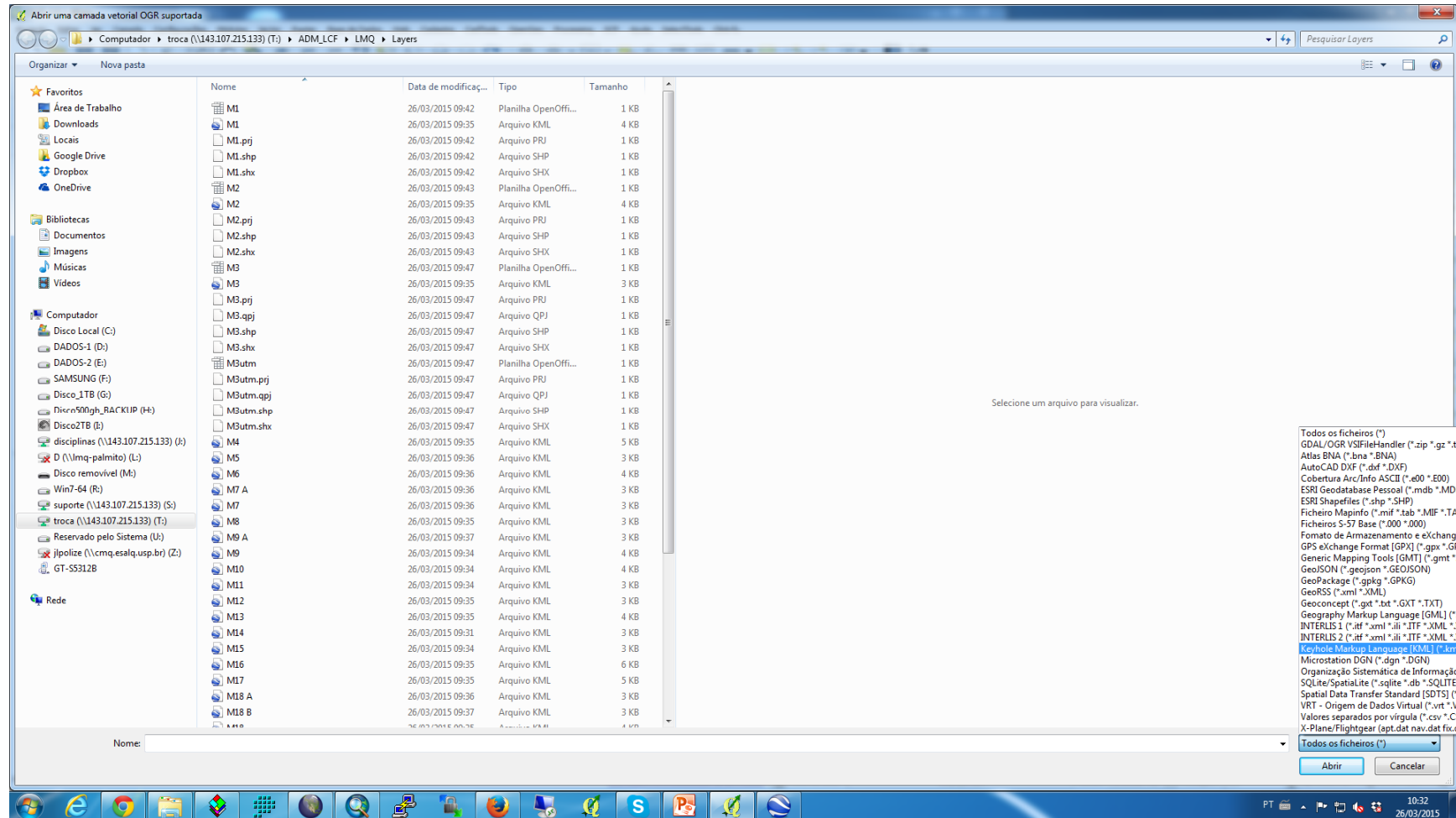
- Salvar o polígono do Google Earth em formato .kml



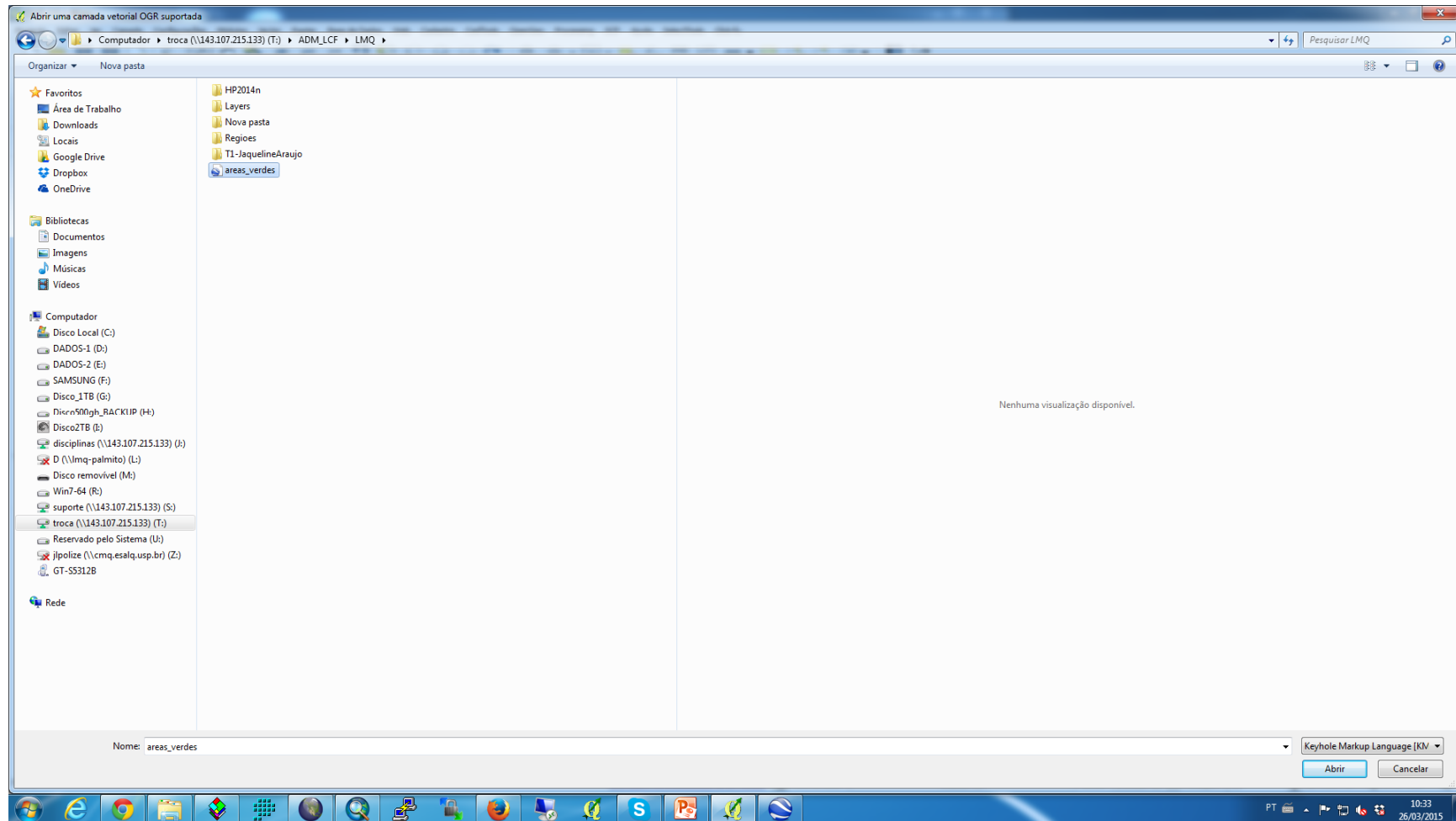
- Salvar o polígono do Google Earth em formato .kml



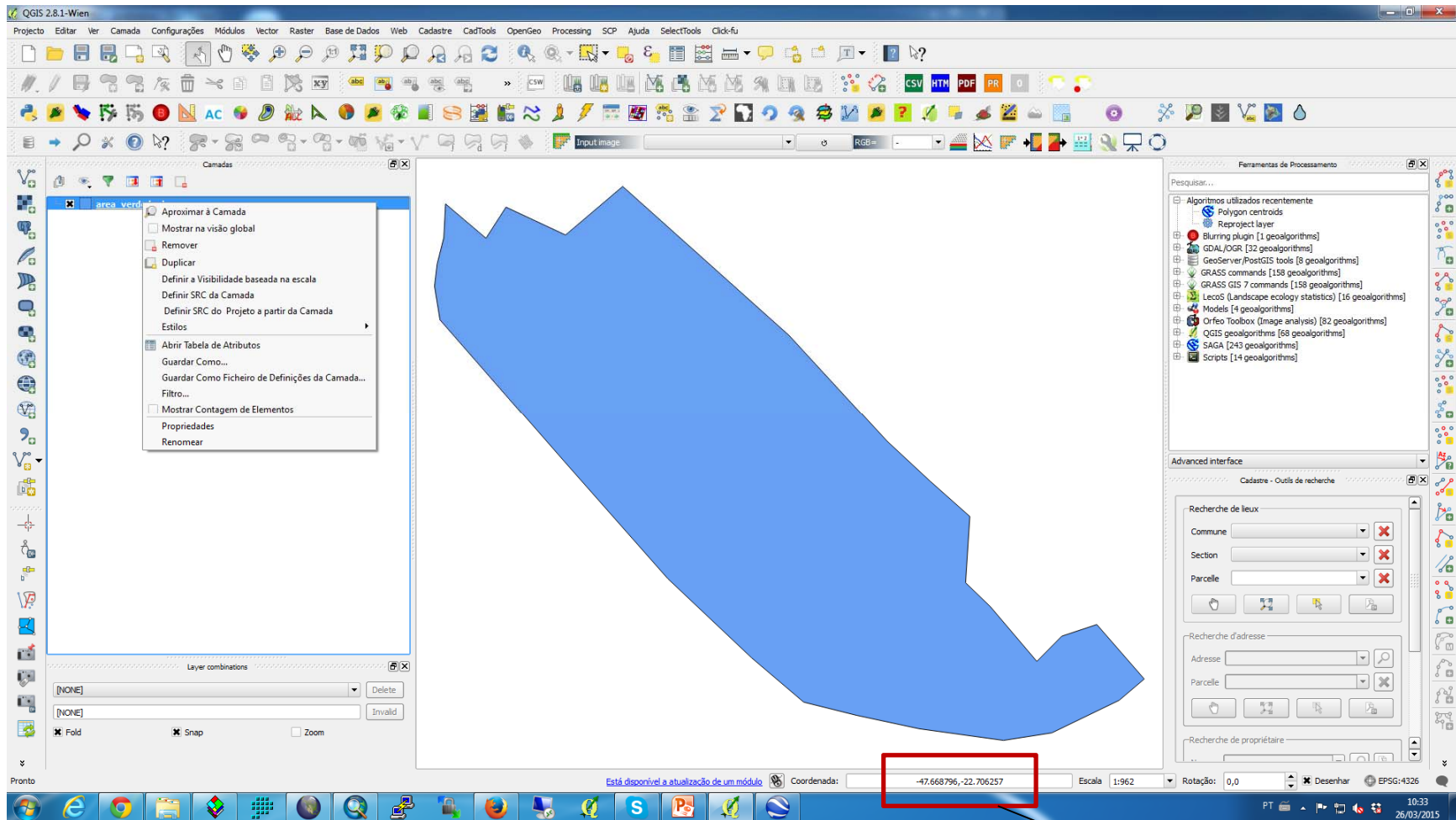
- Abrir o QGIS e carregar o arquivo areas_verdes.kml



- Abrir o QGIS e carregar o arquivo areas_verdes.kml

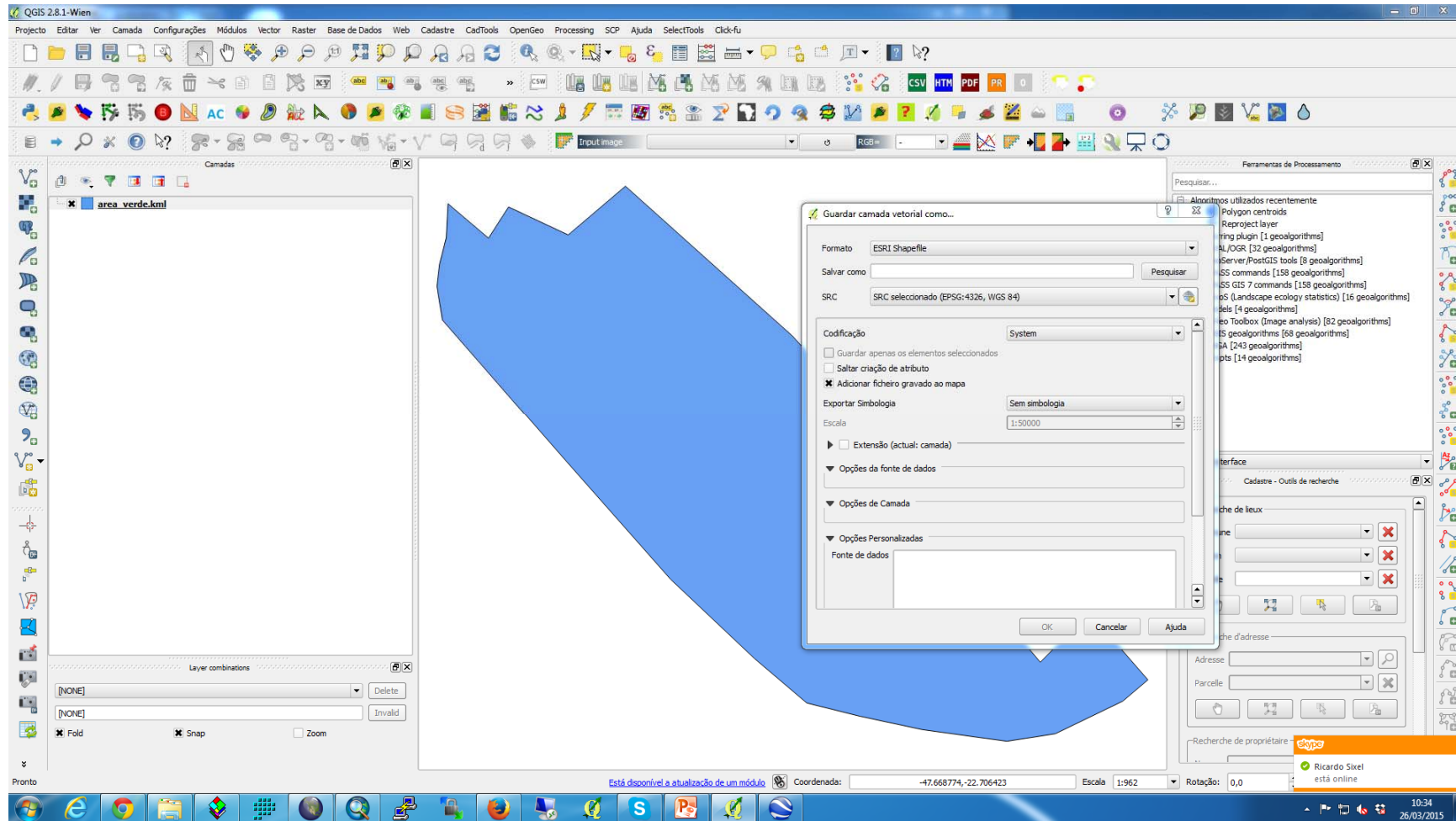


- Guardar Como o arquivo areas_verdes.kml

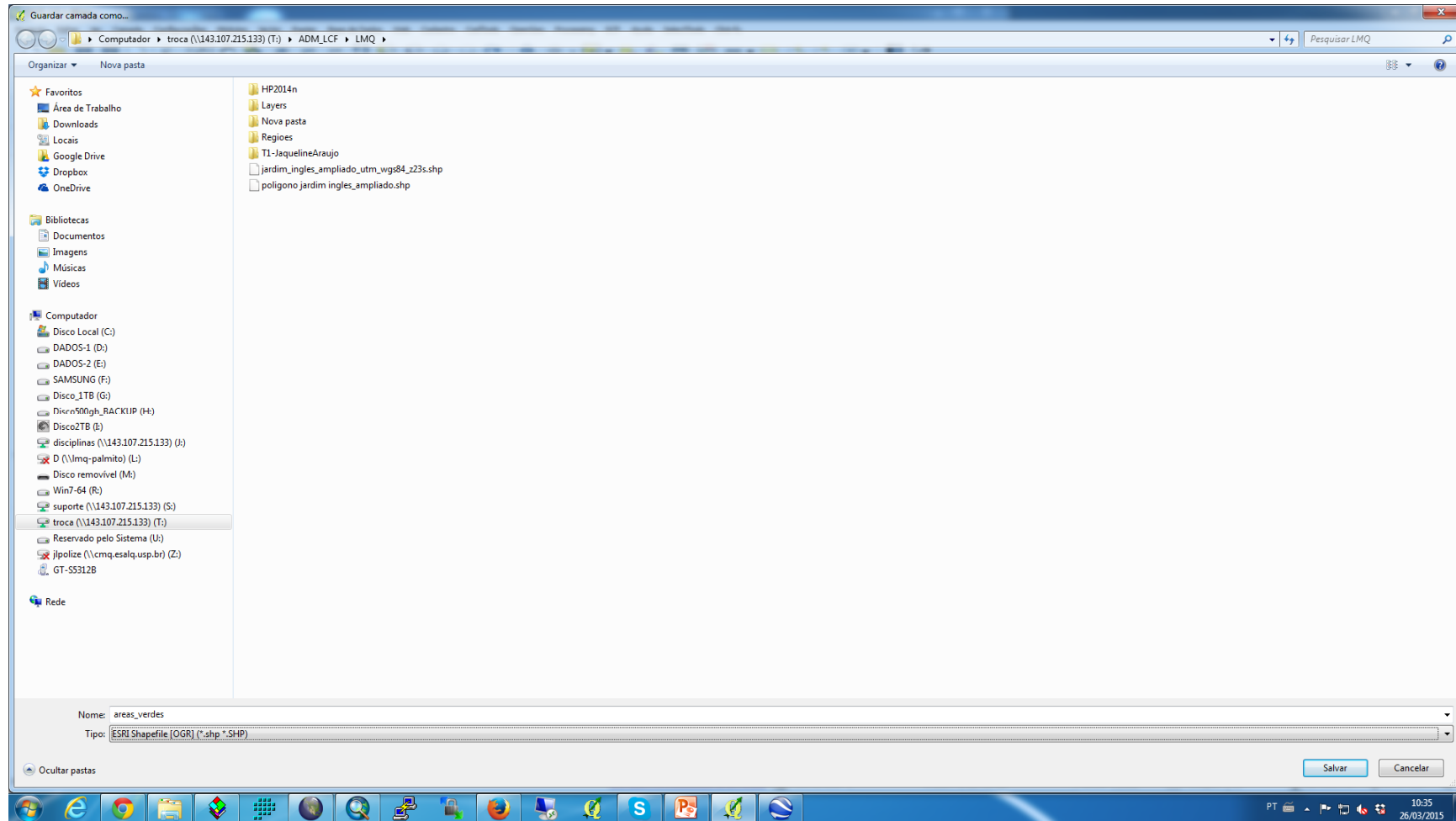


Coordenadas Geográficas

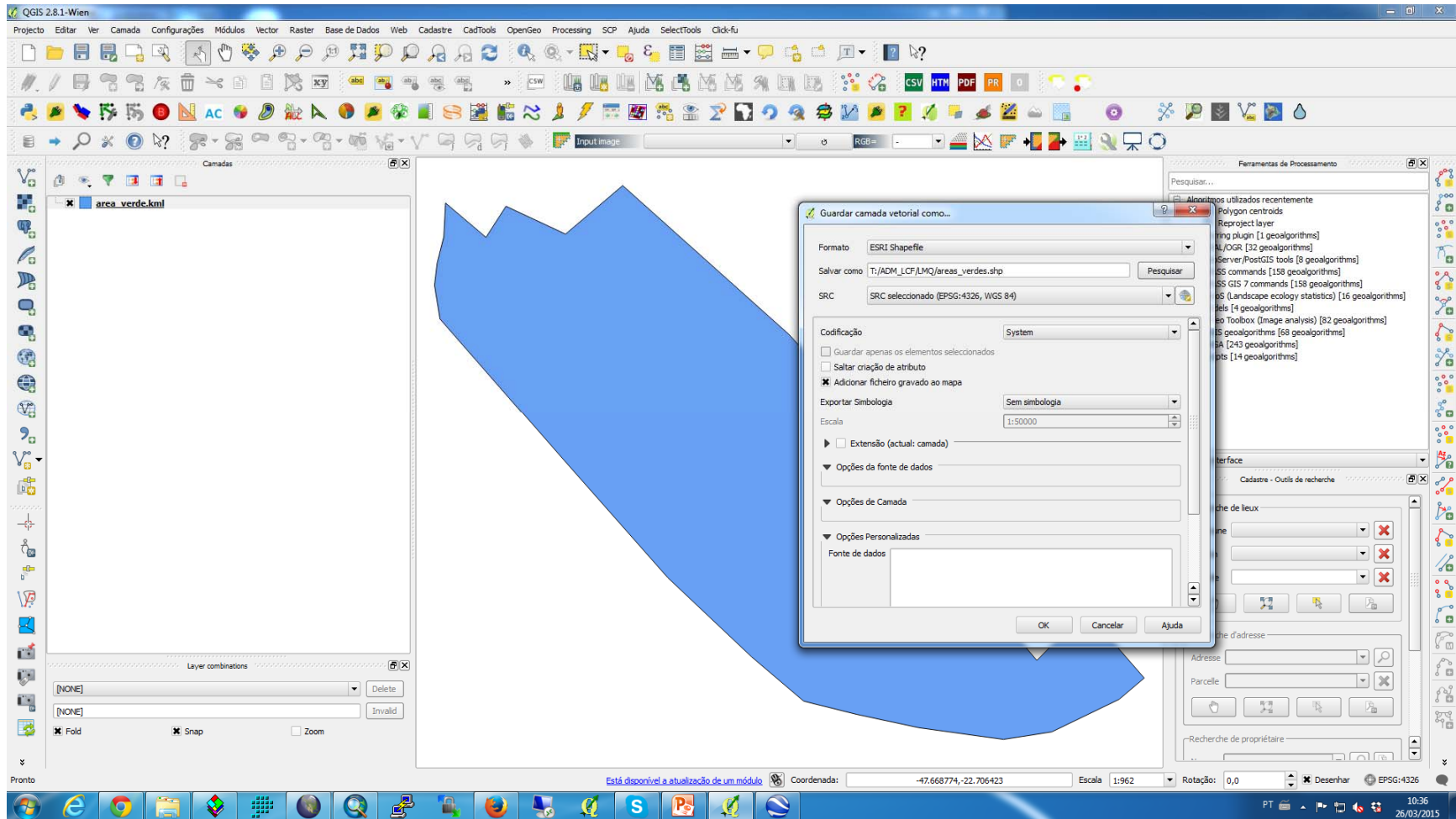
- Guardar Como o arquivo areas_verdes.kml em areas_verdes.shp



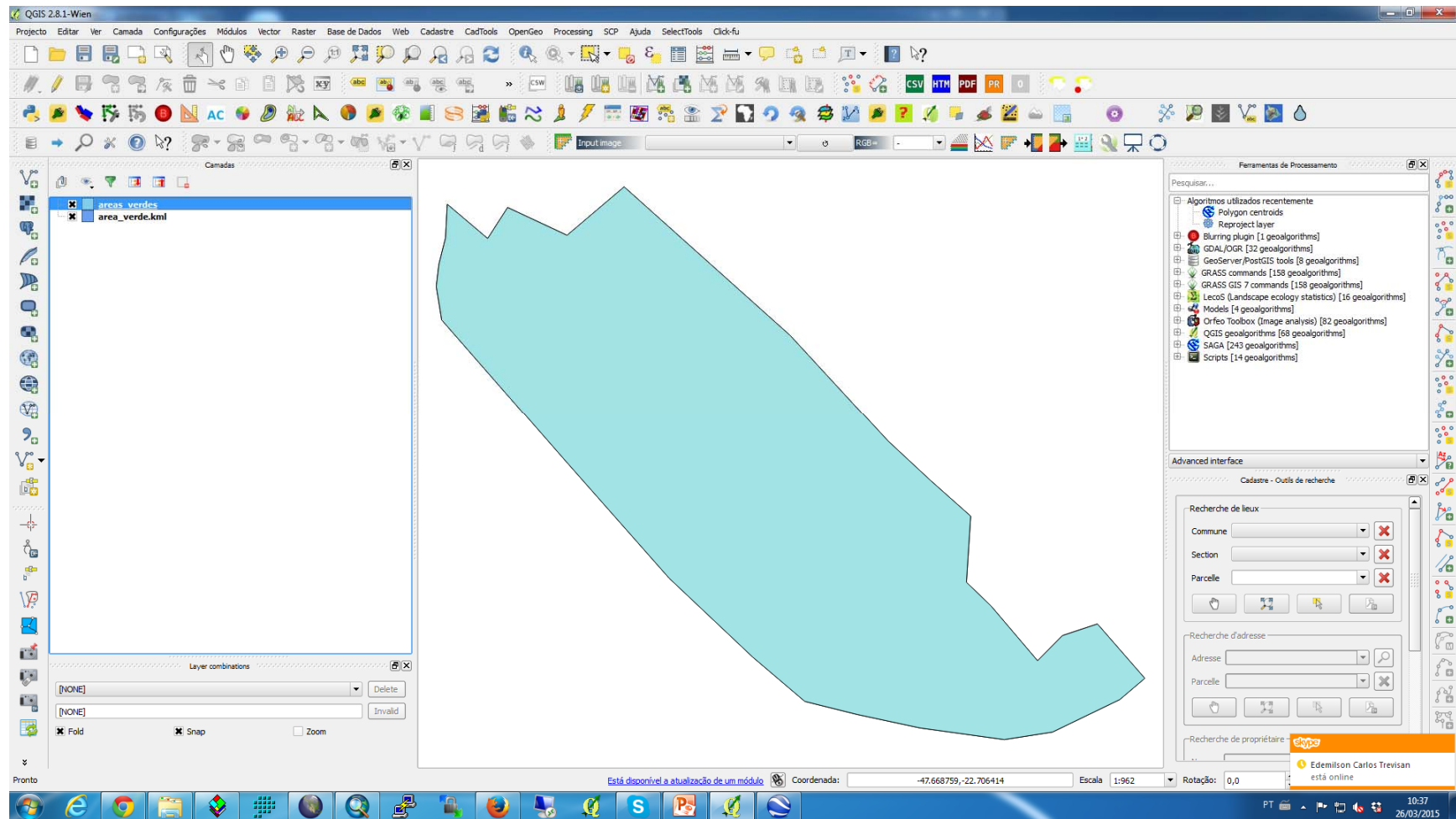
- Guardar Como o arquivo areas_verdes.kml em areas_verdes.shp



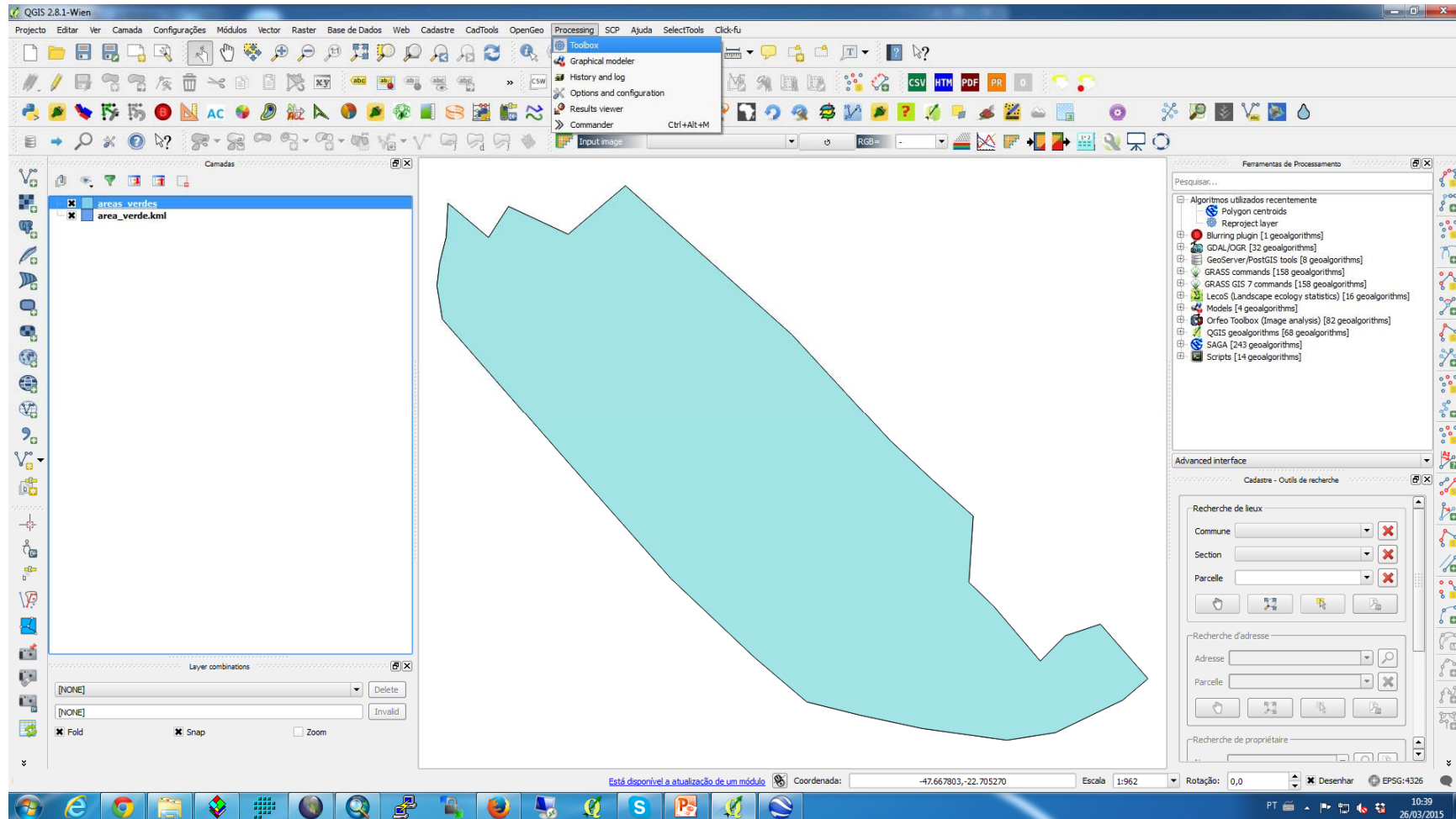
- Guardar Como o arquivo areas_verdes.kml em areas_verdes.shp



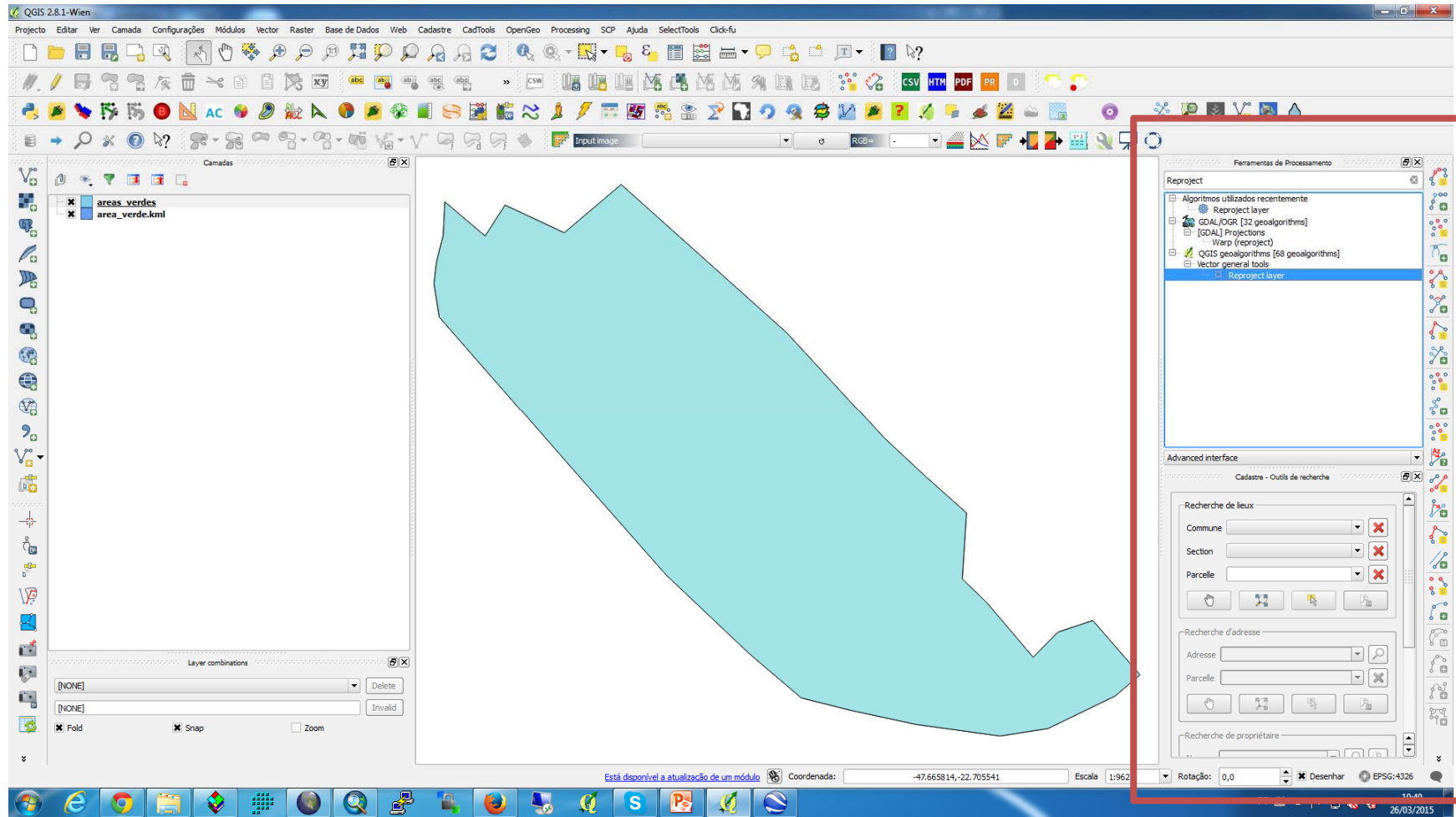
- Finalizado **areas_verdes.shp**
- Próximo passo **Reprojetar** para Sistema de Coordenadas UTM Datum WGS84 – Z23S



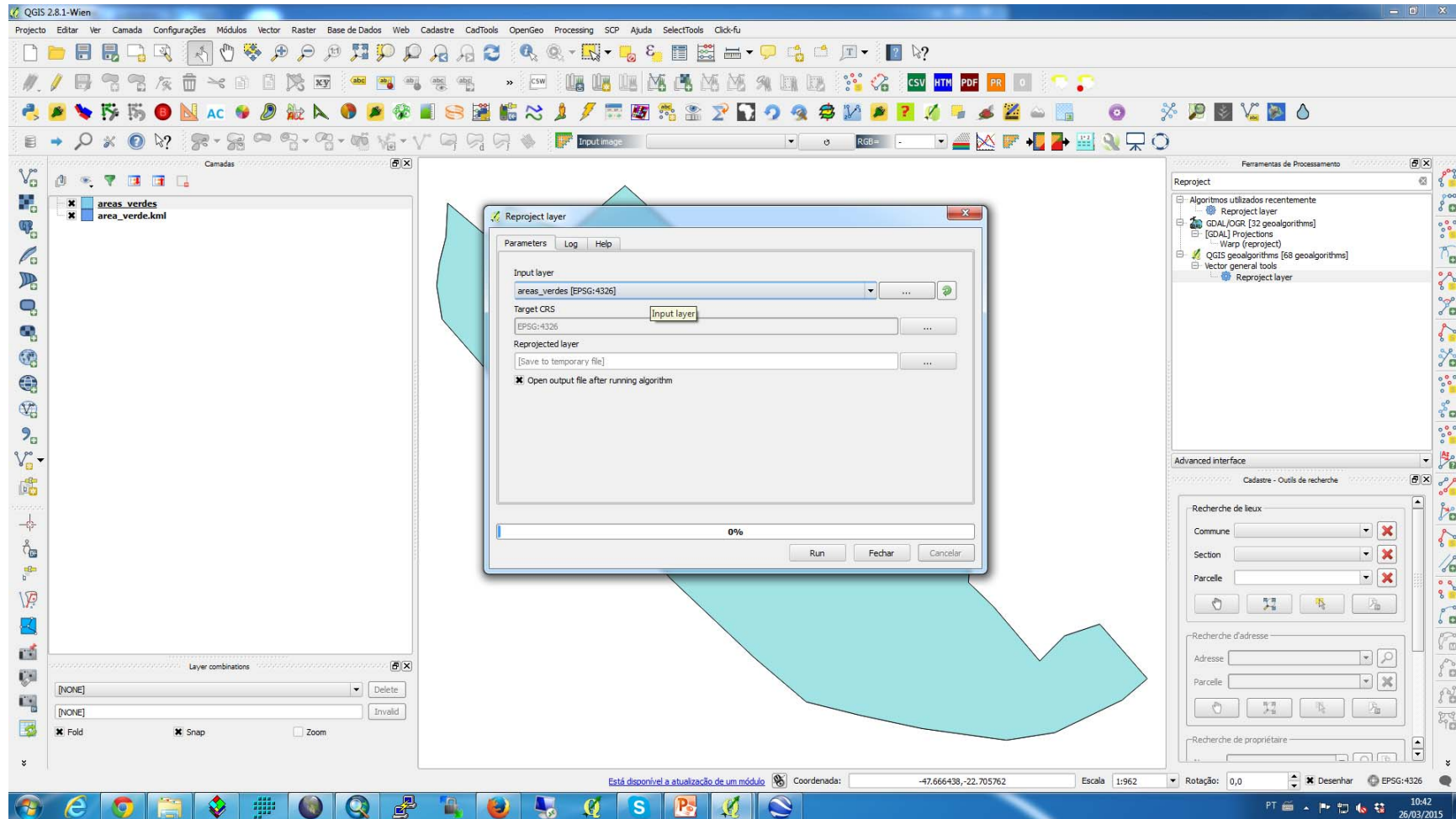
- Menu – Processamento (Processing) – Ferramentas (Toolbox)



- Abriu a Caixa no canto Direito – Ferramentas de Processamento – Reproject Layer



- Na caixa Reproject Layer



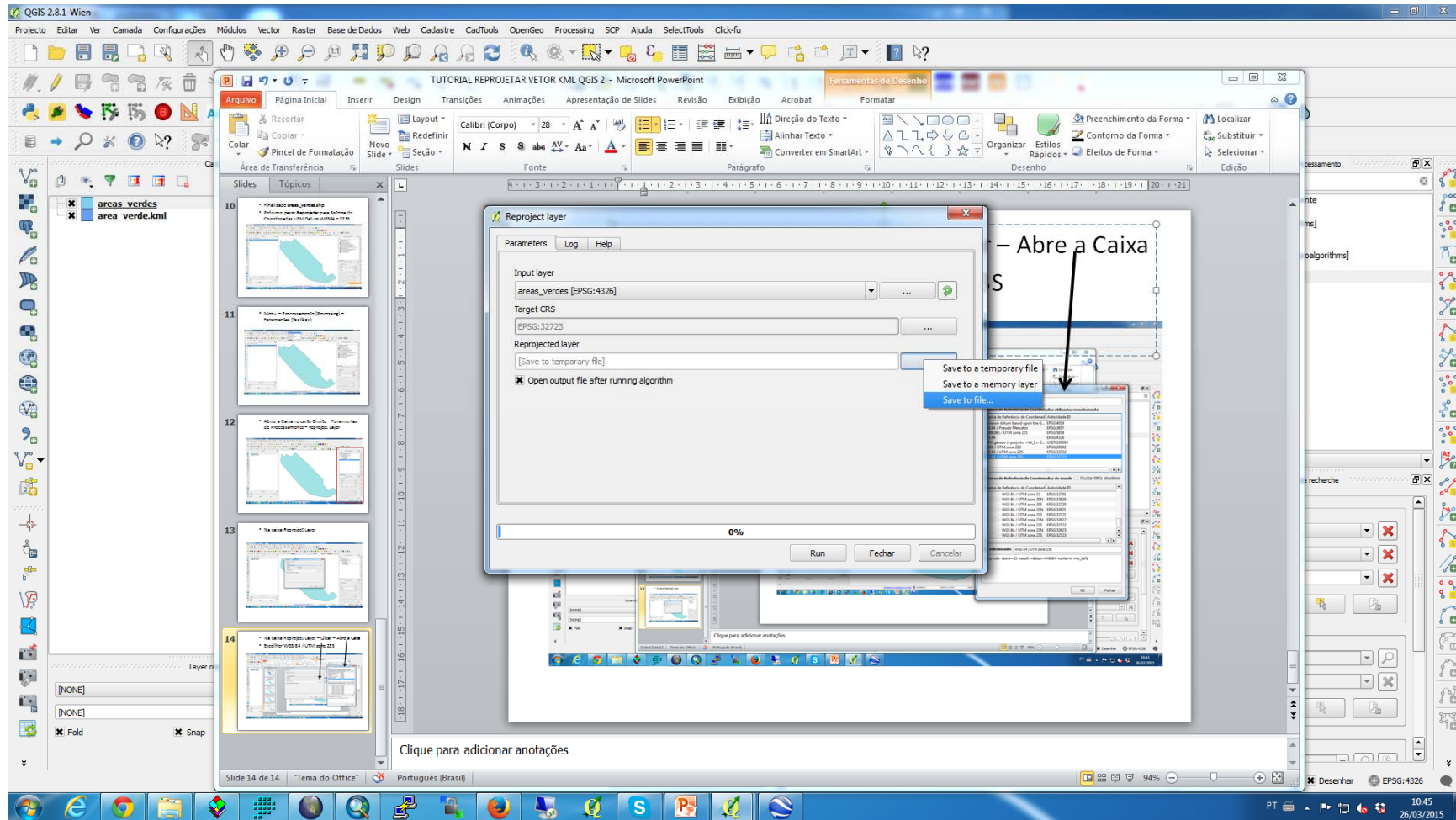
- Na caixa Reproject Layer – Clicar – Abre a Caixa
- Escolher WGS 84 / UTM zone 23S

The screenshot displays the QGIS 2.8.1-Wien interface. The main window shows a PowerPoint presentation titled "TUTORIAL REPROJETAR VETOR KML QGIS 2 - Microsoft PowerPoint". The "Reproject layer" dialog box is open, showing the "Parameters" tab. The "Input layer" is set to "areas_verdes [EPSG:4326]". The "Target CRS" is set to "EPSG:4326". The "Projected layer" is set to "[Save to temporary file]". The "Open output file after running algorithm" checkbox is checked. The "qgis-bin" dialog box is also open, showing a list of coordinate systems. The "WGS 84 / UTM zone 23S" option is selected. The "SRG selecionado" field shows "WGS 84 / UTM zone 23S". The "Proj" field shows "+proj=utm +zone=23 +south +datum=WGS84 +units=m +no_defs".

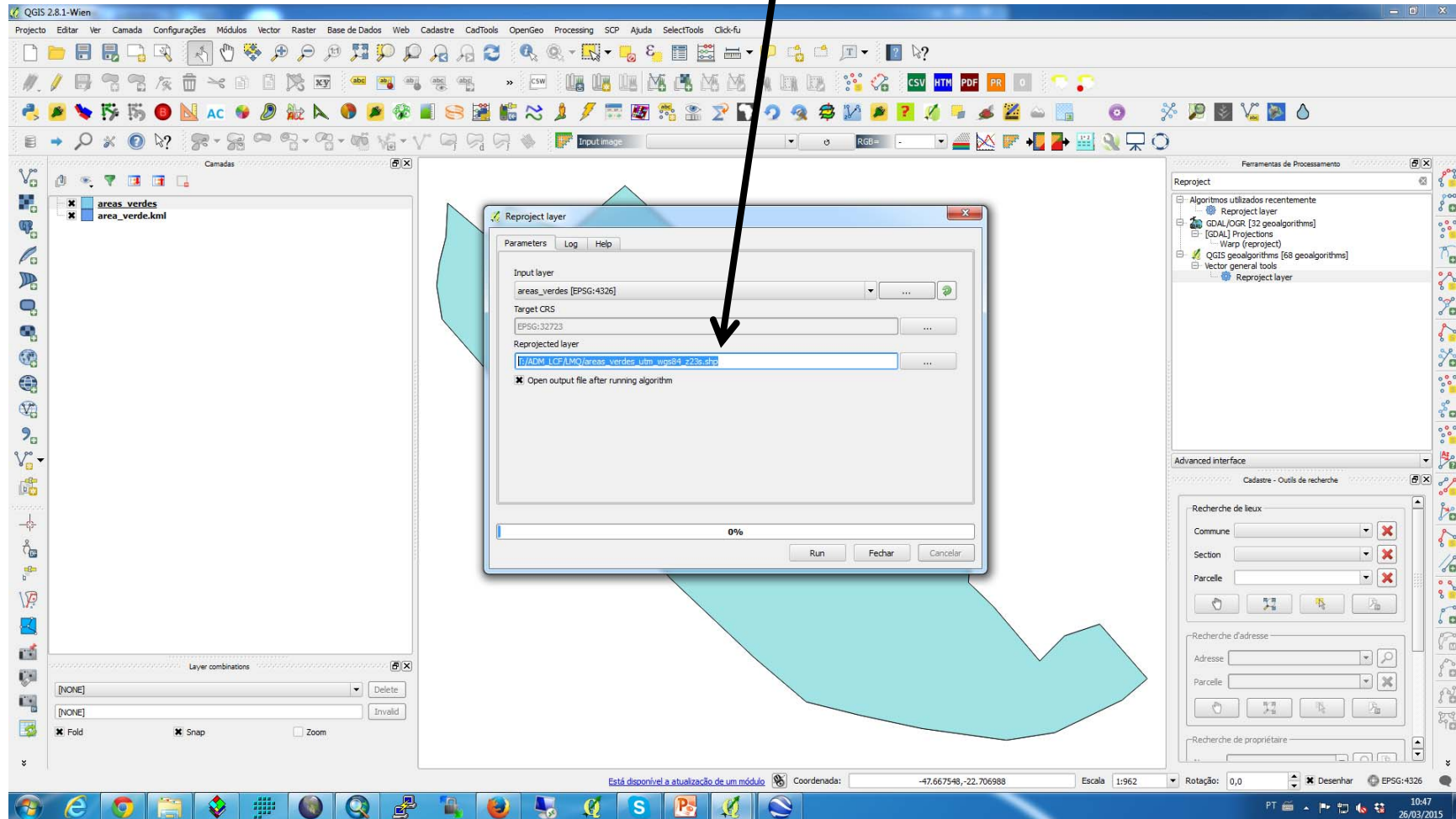
Sistema de Referência de Coordenad	Autoridade ID
Unknown datum based upon the G...	EPSG:4019
WGS 84 / Pseudo Mercator	EPSG:3857
SAD69(96) / UTM zone 22S	EPSG:3858
WGS 84	EPSG:4326
* SRC gerado (+proj=lcc +lat_1=-2...	USER:100004
SAD69 / UTM zone 22S	EPSG:29192
WGS 84 / UTM zone 22S	EPSG:32722
WGS 84 / UTM zone 23S	EPSG:32723

Sistema de Referência de Coordenad	Autoridade ID
WGS 84 / UTM zone 1S	EPSG:32701
WGS 84 / UTM zone 20N	EPSG:32620
WGS 84 / UTM zone 20S	EPSG:32720
WGS 84 / UTM zone 21N	EPSG:32621
WGS 84 / UTM zone 21S	EPSG:32721
WGS 84 / UTM zone 22N	EPSG:32622
WGS 84 / UTM zone 22S	EPSG:32722
WGS 84 / UTM zone 23N	EPSG:32623
WGS 84 / UTM zone 23S	EPSG:32723

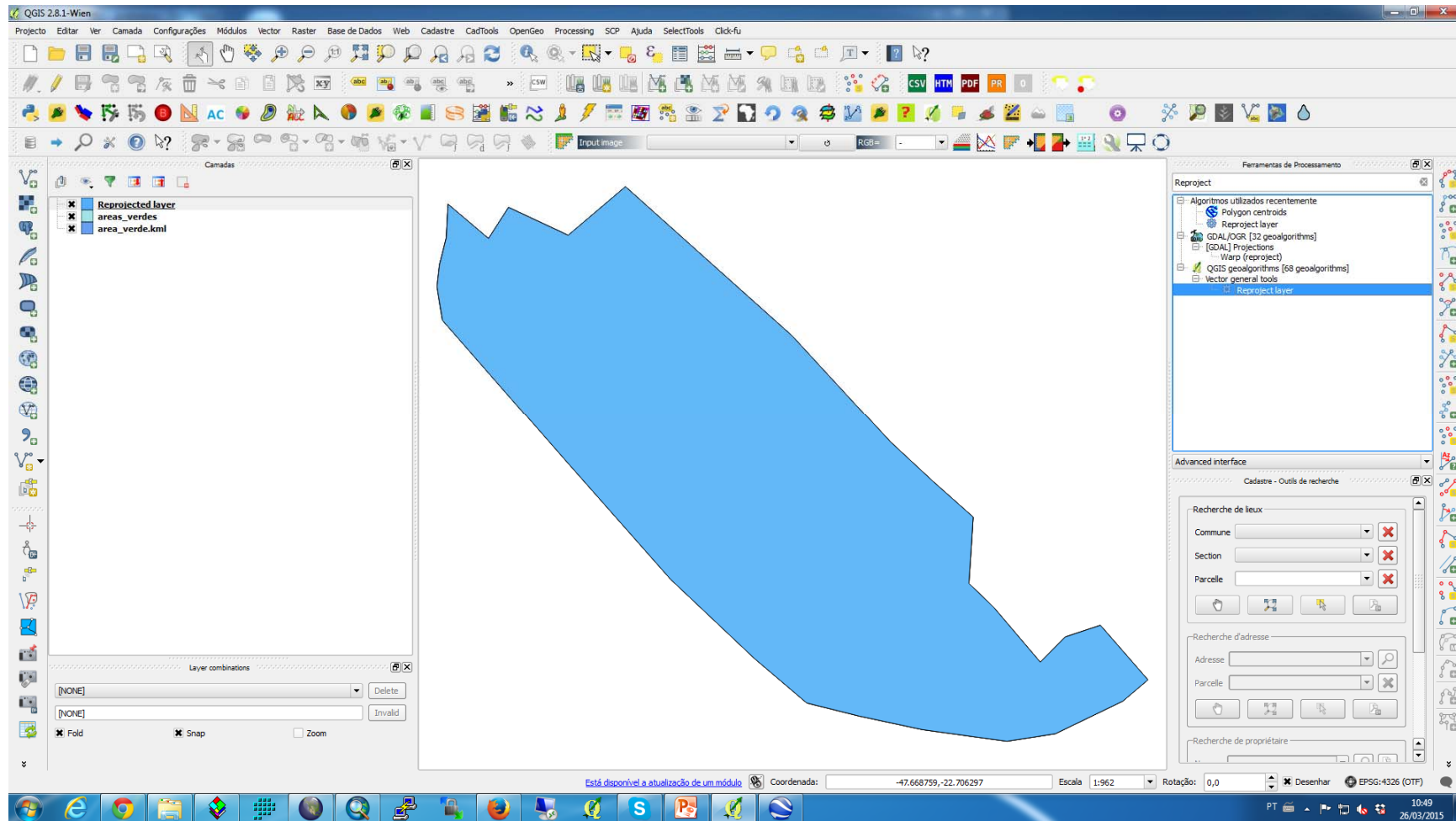
- Salvar arquivo na Caixa Reprojected Layer = areas_verdes_utm_wgs84_z23s.shp



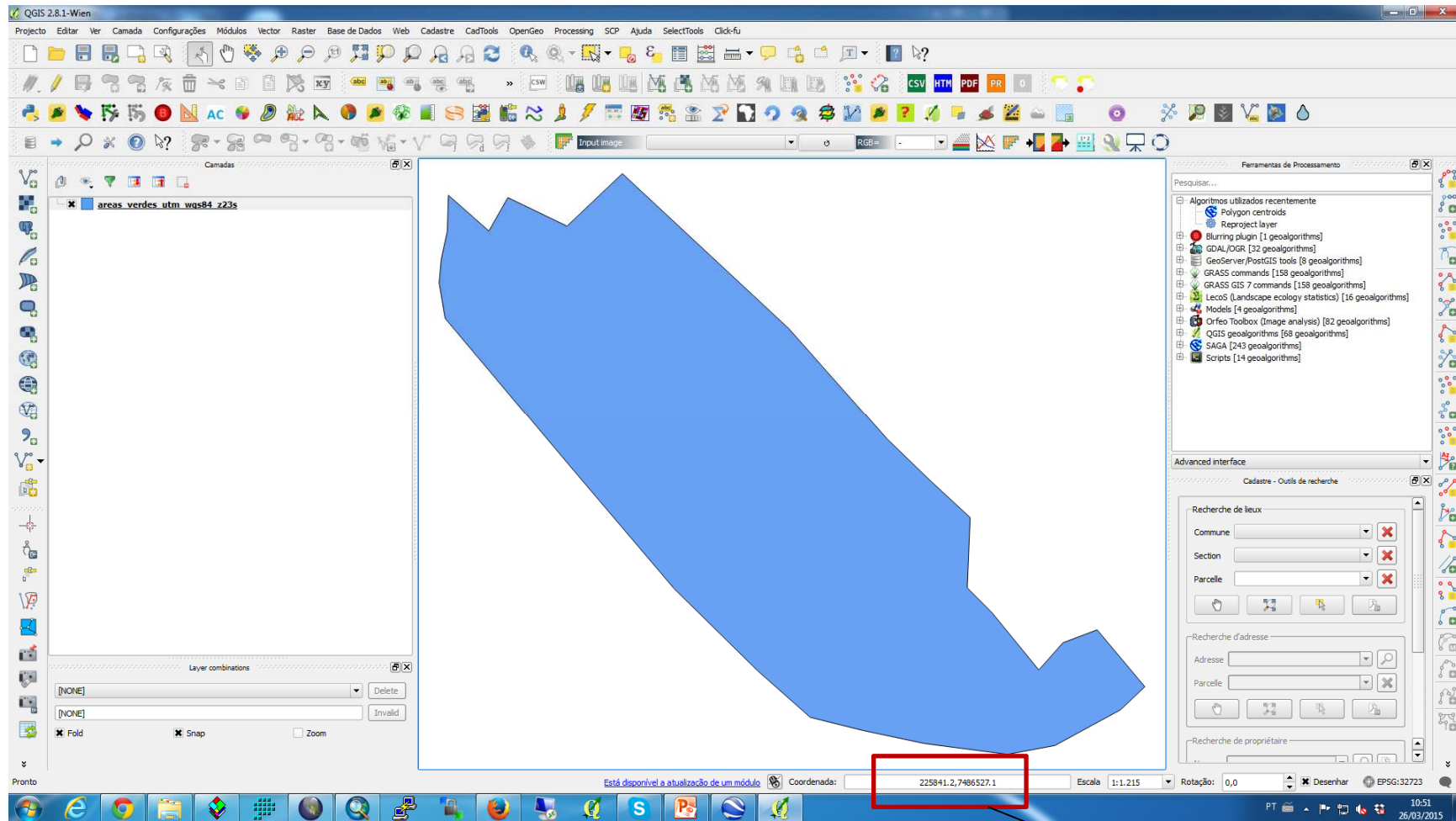
- Salvar arquivo na Caixa Reprojected Layer =
areas_verdes_utm_wgs84_z23s.shp



- Fecha o QGis e Abre novamente



- Abre novamente Qgis e o layer areas_verdes_utm_wgs84_z23s.shp



Coordenadas UTM